

Disconnect the battery terminal.

1. Drain the water system and remove the top hose from the radiator.
2. Remove the original shroud and fan.
3. Assemble the 2 fans onto the 2 brackets as shown in Fig.1 and Fig.2.
4. Slide the fan and bracket assembly in place where the original shroud was mounted and mount the top bracket with the included shoulder bolts and spring washers Fig.3 and Fig.4.
5. Follow Electronic Fan Controller instructions for information on set-up. see Fig.5 for wiring the 2 fans to the controller.

Fig.1

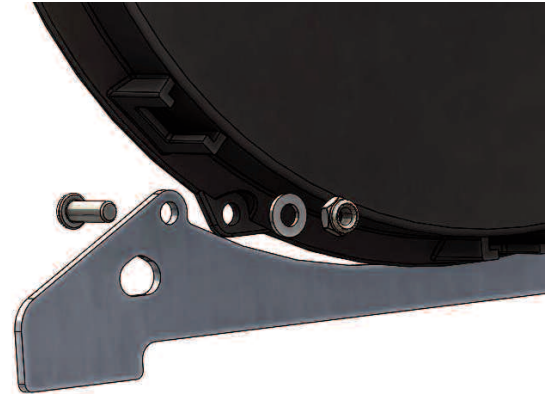


Fig.2

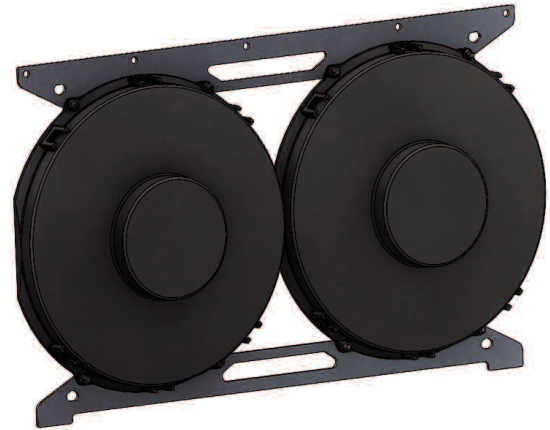


Fig.3

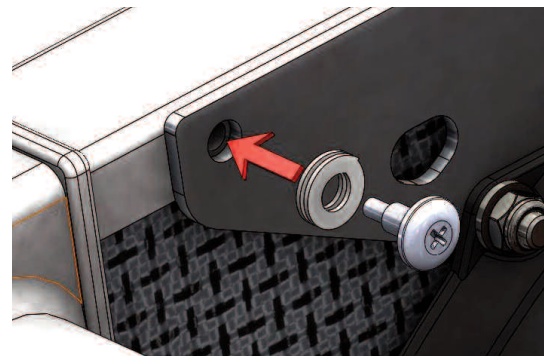


Fig.4

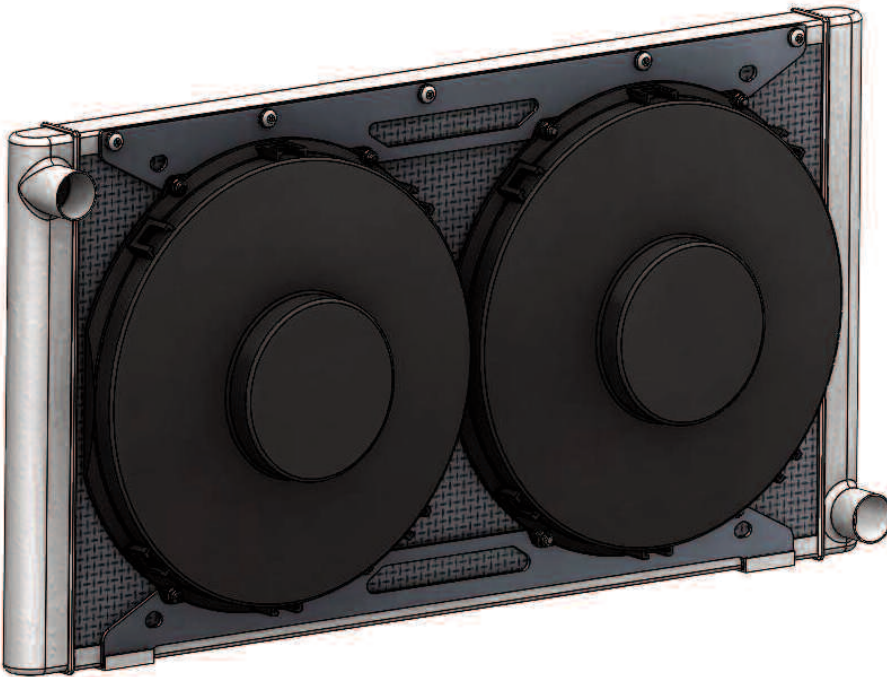


Fig.5

